

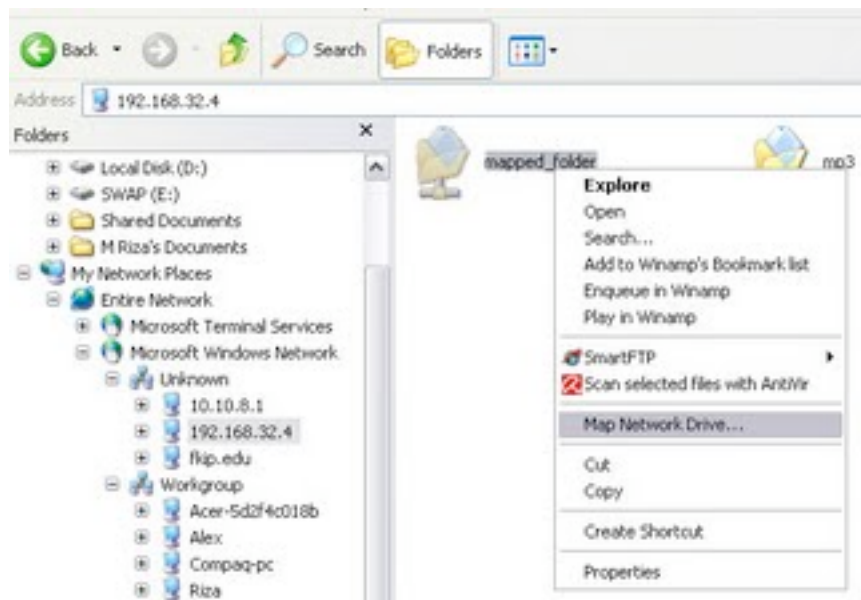
Accessing Joshua Server Share via Windows XP

Open windows explorer and type \\joshua.cs.gordon.edu (double backslash “\” followed by joshua.cs.gordon.edu) in the address box at the top of the explorer window (see example below)

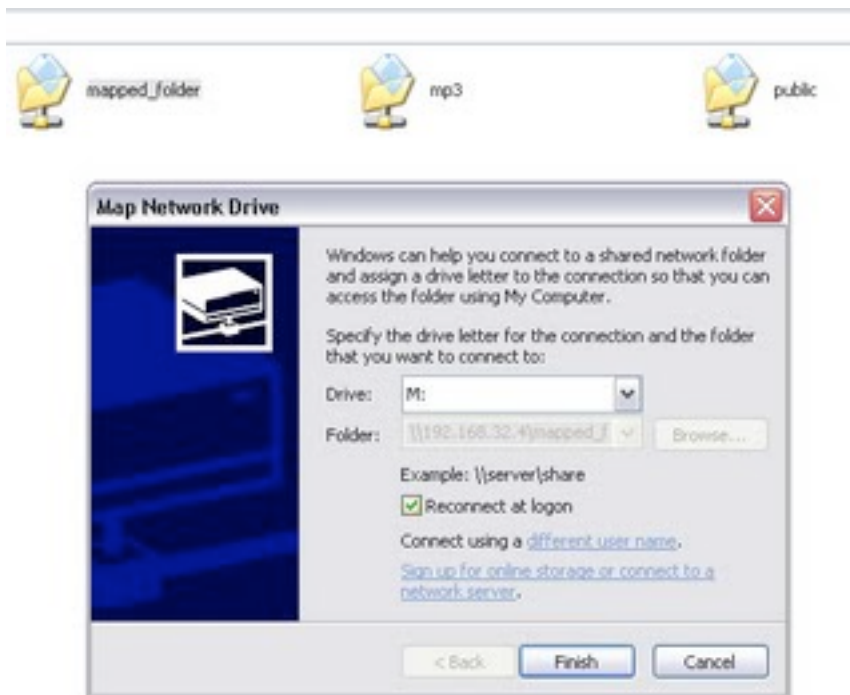
\\joshua.cs.g.rdon.edu



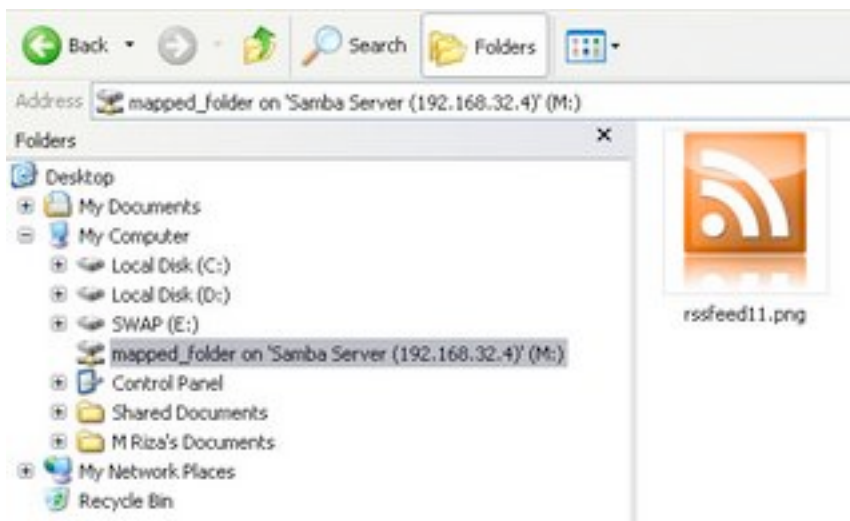
Right click on your shared folder and click "Map Network Drive".



Select driver letter to be assigned as network drive letter, and ensure "Reconnect At Logon" is checked.



Click finish, and you should see an new drive in your windows explorer.



This mapped folder will be integrated to your system as a new drive, and you can even access your new drive with MS-DOS.